

Rescue Medications

Proventil, ProAir, Ventolin (albuterol), Xopenex (levalbuterol)



Rescue Medications:

- Make breathing easier, by opening the airways.
- Act fast and last for several hours.
- May be given every four hours when needed.
- If exercise triggers your child's asthma, have them take a rescue medicine 15 minutes before exercising.

Other names include:

- Rescue
- Quick relief
- Openers
- Bronchodilators

These medications come in two forms:

- Inhalers
- Nebulizer solutions



These medicines may cause:

- Fast heartbeat
- Shaking
- Nausea

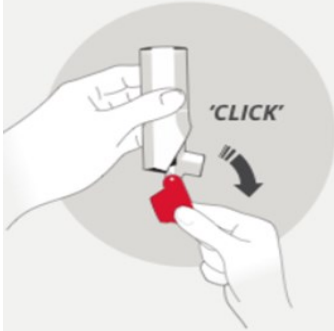
ProAir RespiClick Inhaler

ProAir RespiClick Inhaler is also a rescue medication.

It contains Albuterol inhalation powder.



Directions for use:



Open

Make sure the red cap is closed before each dose.

Hold the inhaler upright as you open the red cap fully.

Pull the red cap all the way back until you feel and hear a “CLICK.”

Your ProAir RespiClick® inhaler is now ready to use.

Do not open the red cap unless you are taking a dose.



Inhale

Before you inhale, breathe out (exhale) through your mouth and push as much air from your lungs as you can.

Do not exhale into the inhaler mouthpiece.

Put the mouthpiece in your mouth and close your lips tightly around it.

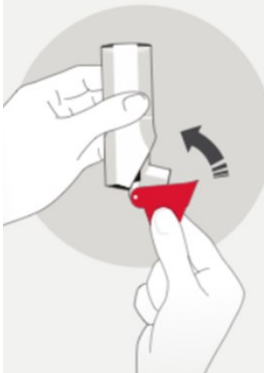
Do not block the vent above the mouthpiece with your lips or fingers.

Breathe in quickly and deeply through your mouth to deliver the dose of medicine to your lungs.

Remove the inhaler from your mouth.

Hold your breath for about 10 seconds, or as long as you comfortably can.

Your ProAir RespiClick® inhaler delivers your dose of medicine as a very fine powder that you may or may not taste or feel. **Do not** take an extra dose from the inhaler even if you do not taste or feel the medicine.



Close

Close the red cap firmly over the mouthpiece.

Always close the red cap after each inhalation so that your inhaler will be ready for your next dose.

If you need another dose, close the red cap and repeat all of the steps.

ProAir RespiClick® contains a powder, and must be kept clean and dry at all times.